

Perspectives of Downy Mildew Spreading in Brazil

Maria Regina UNGARO, R.R. ALFONSI and N.P. CALVET

Agronomic Institute of São Paulo State, P.O. Box 28,
13001-970, Campinas, SP, Brazil

SUMMARY

The research analyses the minimum air temperature and monthly rainfall in the main areas for sunflower cultivation expansion in Brazil.

For the evaluation of mildew development, 7 different places were studied (Figure 1). In each one was analysed, monthly, the minimum temperature and rainfall average for the last 30 years. These climatological data are correlated to mildew development. Climatological contrasting regions are presented graphically (Figure 2 to 8). For easier visualization, a 14°C line were drawn in each figure, wich represents the ideal average minimum temperature for downy mildew development.

The results showed three ecological areas in relation to downy mildew spreading. The South part of Brazil that is very favourable for the disease development (Figure 4 and 8); the area around the Tropic of Capricornium were the spreading is often related to the planting season (Figure 5, 6 and 7); and a third area, that takes all the North, Northeast and Central part of Brazil, where the disease spread will be very difficult or impossible due to the climatic unfavourable conditions (Figure 2 and 3).

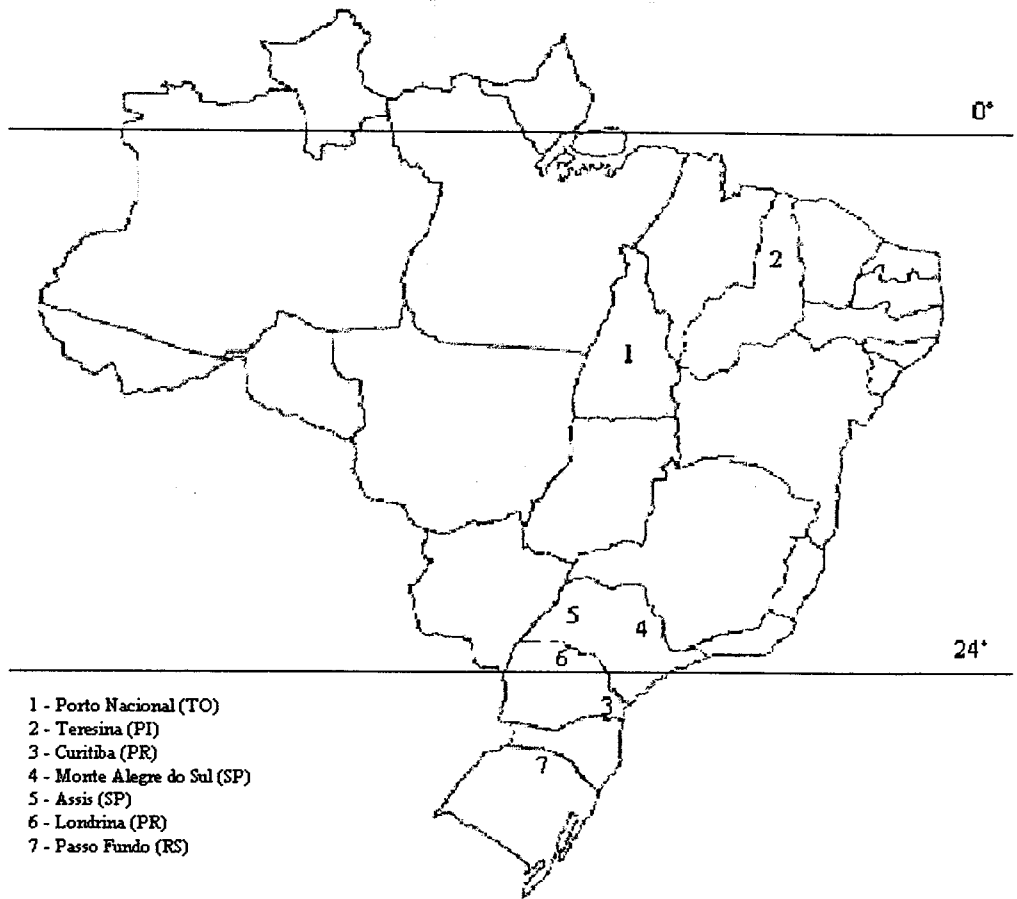


FIGURE . 1

FIGURE . 2 - PORTO NACIONAL

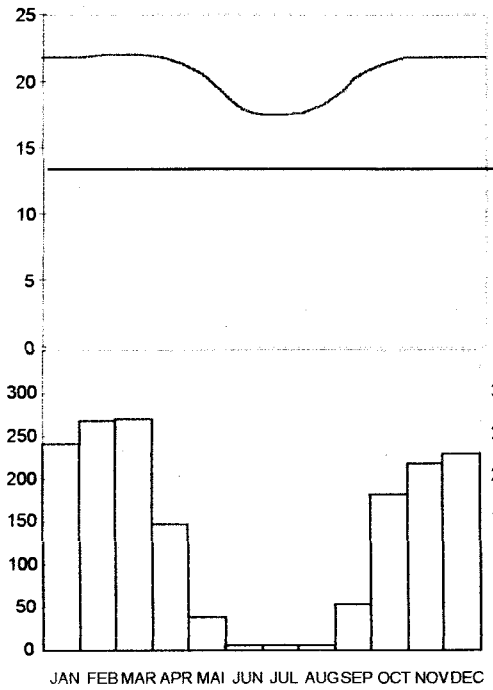


FIGURE . 3 - TERESINA - PI

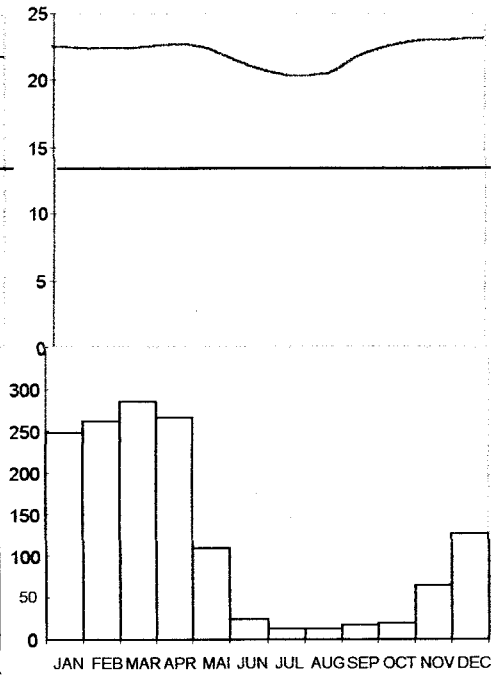


FIGURE . 4 - CURITIBA - PR

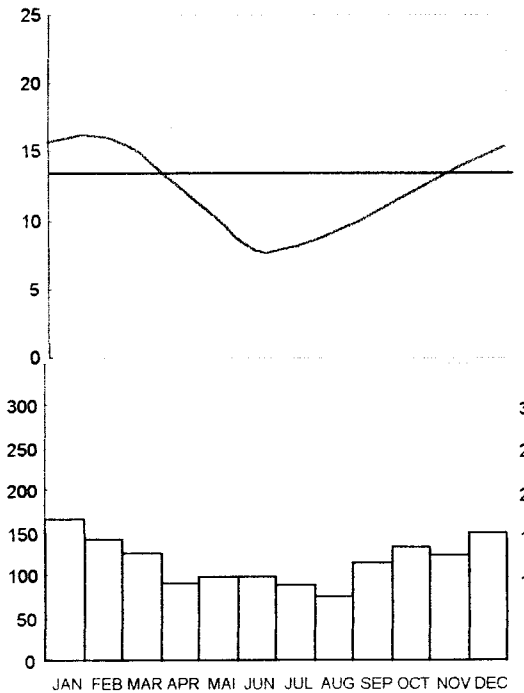


FIGURE . 5 - M. ALEGRE DO SUL - S.P.

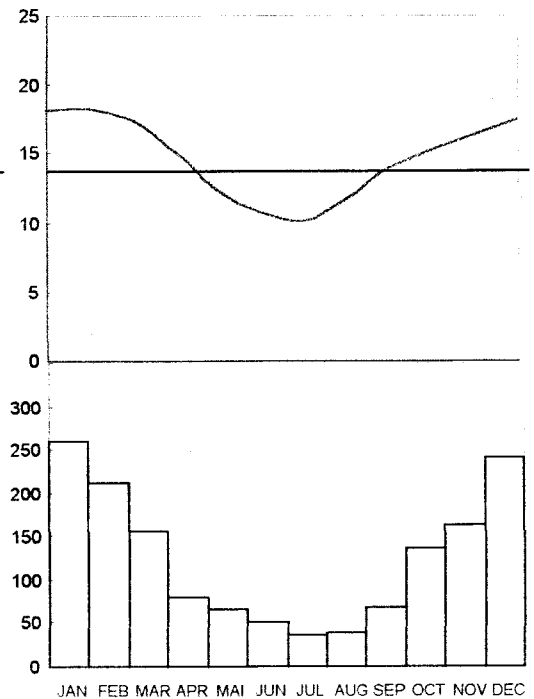


FIGURE . 6 - ASSIS - S.P.

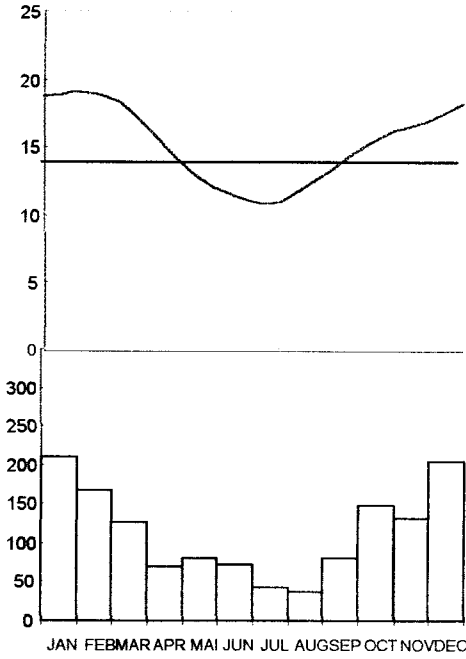


FIGURE . 7 - LONDRINA - PR

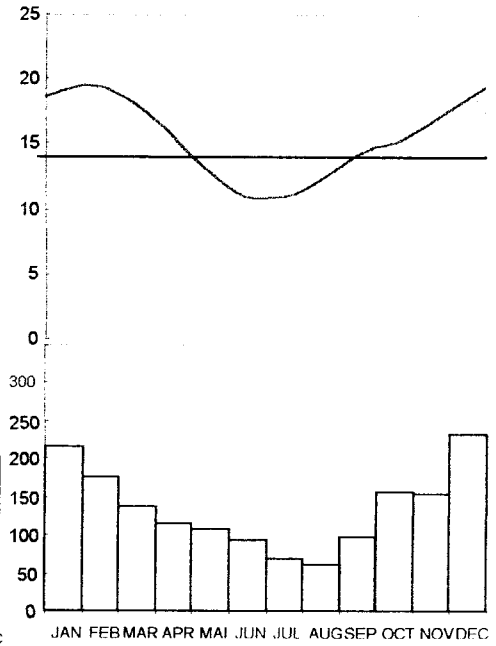


FIGURE . 8 - PASSO FUNDO - R.S.

